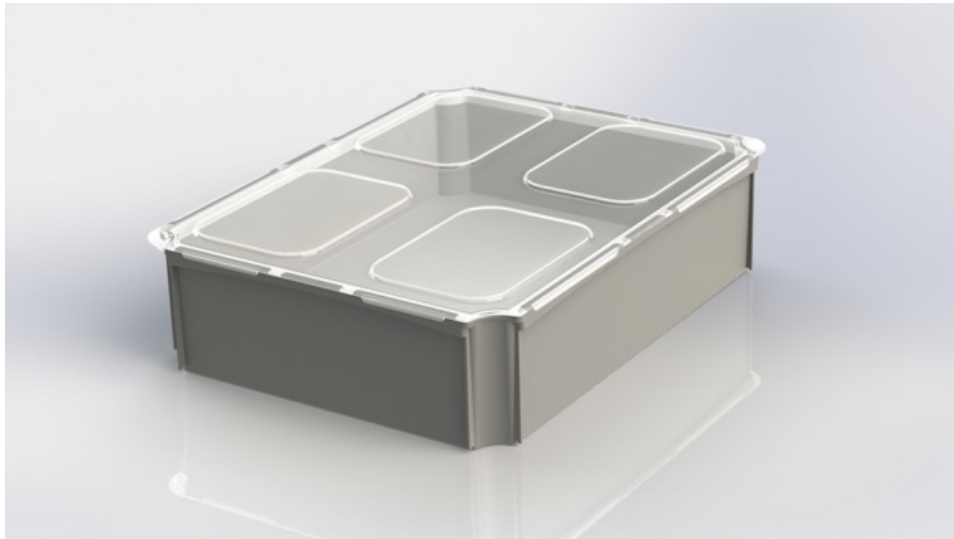


Data sheet

1/2 Lid for Insert transversal 2.0



Technical details

Product description		1/2 Lid for Insert transversal 2.0
Wall Structure		closed
Colors		transparent
Country of origin		Germany
Certifications (production plant)		ISO 9001; ISO 14001; ISO 50001; REACH
Material		PP (Polypropylen)
Barcode		EAN 13 digits
HS Code		39231090
Outer dimensions (in mm)	height	15,0
	width	277,0
	depth	358,0
Inner dimensions (in mm)	height	N/A
	width	260,0
	depth	341,0
Height folded (in mm)		N/A
Height (folded) in the stack (in mm)		N/A
Useful interior height		N/A
Volume (in litres)		N/A
Weight (in g)		203,0
Load capacity (in kg)		N/A
Stacking load (in kg)		N/A
Temperature resistance	short	N/A
	long	N/A

Transport

	VPE (small)	standard pallet	pallet to 2,20m	pallet 2,20m - 2,40m	pallet 2,40m – 2,60m
Quantity / number of items	N/A	N/A	N/A	N/A	N/A
Cardboard / bundle quantity	N/A	N/A	N/A	N/A	N/A
Height gross (in cm)	N/A	N/A	N/A	N/A	N/A
Width (in cm)	N/A	N/A	N/A	N/A	N/A
Depth (in cm)	N/A	N/A	N/A	N/A	N/A
Weight (in kg)	N/A	N/A	N/A	N/A	N/A
Transport packaging	N/A	N/A	N/A	N/A	N/A

Due to the manufacturing, there may be deviations in the weights.

EP = euro pallet

DP = display pallet

N/A = not available