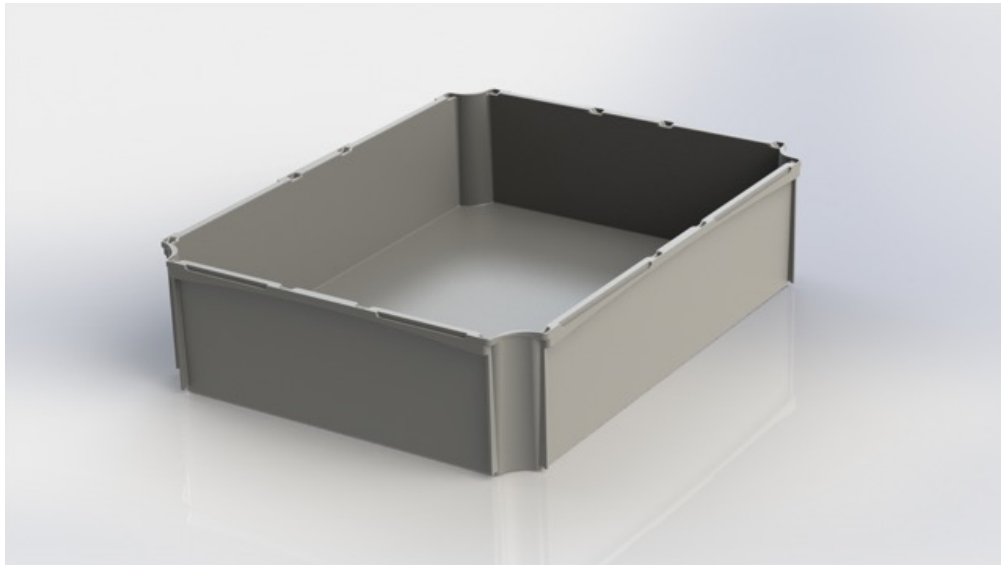


Data sheet

1/2 Insert transversal 2.0



Technical details

Product description		1/2 Insert transversal 2.0
Wall Structure		closed
Colors		grey
Country of origin		Germany
Certifications (production plant)		ISO 9001; ISO 14001; ISO 50001; REACH
Material		PP (Polypropylen)
Barcode		EAN 13 digits
HS Code		39231090
Outer dimensions (in mm)	height	88,0
	width	277,0
	depth	358,0
Inner dimensions (in mm)	height	79,5
	width	262,0
	depth	343,0
Height folded (in mm)		N/A
Height (folded) in the stack (in mm)		N/A
Useful interior height		N/A
Volume (in litres)		N/A
Weight (in g)		415,0
Load capacity (in kg)		N/A
Stacking load (in kg)		N/A
Temperature resistance	short	N/A
	long	N/A

Transport

	VPE (small)	standard pallet	pallet to 2,20m	pallet 2,20m - 2,40m	pallet 2,40m – 2,60m
Quantity / number of items	N/A	N/A	N/A	N/A	N/A
Cardboard / bundle quantity	N/A	N/A	N/A	N/A	N/A
Height gross (in cm)	N/A	N/A	N/A	N/A	N/A
Width (in cm)	N/A	N/A	N/A	N/A	N/A
Depth (in cm)	N/A	N/A	N/A	N/A	N/A
Weight (in kg)	N/A	N/A	N/A	N/A	N/A
Transport packaging	N/A	N/A	N/A	N/A	N/A

Due to the manufacturing, there may be deviations in the weights.

EP = euro pallet

DP = display pallet

N/A = not available